

An Arts and Cultural Precinct for Tully

Community Consultation Paper

November 2023



Artwork by Gulgnay Traditional Owner Clarence Kinjun, Gladys Henry & Valerie Keenan

Contents

Traditional Owners statement.....	2
Project Overview.....	3
Vision.....	3
Summary.....	3
Contributors.....	4
Next Steps.....	4
Guiding Principles.....	5
Reconciliation and Truth Telling.....	5
Arts and Culture development.....	5
Inclusion and Connection.....	5
Collaboration.....	6
Sustainability.....	6
The positive impact of the Arts in Queensland.....	7
National Arts participation survey.....	7
Australian Public Galleries Snapshot.....	8
Economic benefits for Tully and the Cassowary Coast.....	9
Social benefits for Tully and the Cassowary Coast.....	9
Cultural benefits for Tully, the Cassowary Coast and the Gulgnay people.....	9
Why Tully.....	10
Where in Tully.....	12
Design considerations.....	15
Our Artistic community.....	15
Support to develop the project.....	21
Attachment A: Regional Socio-economic snapshot.....	22
Attachment B: Distances between major centres.....	25
Attachment C: Benefits – economic, social, Traditional Owner.....	26
Attachment D: Sustainability.....	29
Attachment E: Stakeholders.....	30
Attachment F: Potential funding sources.....	31

Traditional Owners statement

Conversation with Marjorie & Doris Kinjun, Gulgnay Traditional Owner Elders

Davidson Road

October 2023

I would like to see that museum being built in Tully.

Tully hasn't got anywhere to look at our things.

There are some in the library but it would be better to have somewhere so people can see them and so they can be looked after.

Somewhere where the grand children can see them.

Yes we saw them, the old things, when we went there, to the museum in Brissie.

We saw a lot down there. They took me there to see the old things. There were baskets, shields, swords.

It made me sad to see them there. It would be better to bring them back home.

But where to put them?

Conversation with Clarence Kinjun Gulgnay Traditional Owner

Jones Road off Davidson Road, via Tully

Tuesday October 25, 2023 5.30pm

The Arts and Cultural Precinct for Tully is important not only for Traditional Owners but also for the local community. It will help with reconciliation and Closing the Gap through education in the community. It will help people get a better understanding of Aboriginal culture and our history, creation stories, our language, and about the way our families work together and the values that are important to us. We do have concerns for the future and how to make sure we leave a legacy, but it is my belief that our culture will survive if we can put measures in place now.

We are already recognised as artists in America, at Monaco, across Australia. I have work in the National Maritime Museum in Sydney and other collections. It's not only our art that has been recognised. We have been putting our art, culture and language out there for a long time, but we aren't represented on our own country. It's important for us to have a place to share our culture.

We have worked with and been involved with anthropologists, archaeologists and researchers from Universities and Museums for a long time. A lot of cultural material was taken away and it would be good to be able to bring some of that back. Since the late 1960s we worked with Gladys Henry, Sue Smith, Helen Pedley, Bob Dixon and others, people who have recorded our stories, our language. But it is hard for these fellows, our family, to find that material. A place to put our records and keep it safe would help keep our culture alive for the next generations.

There is still a longer journey to take for us to achieve healing. It is still going on. Recognition has not been achieved.

Project Overview

An **Arts and Cultural Precinct for Tully** will utilise best practice methodologies to design and construct a purpose-built multi-arts and cultural precinct comprising an Art Gallery, Museum, Theatre, Gallery Shop, Meeting Room, Workshop/creative spaces, indoor/outdoor recreational space and offices for the Gulgnay Traditional Owners and preservation of Gulgnay Traditional Objects.

Vision

An **Arts and Cultural Precinct for Tully** project was developed to:

- Ensure the safe storage and display of Gulgnay Traditional Objects that have been returned to the Traditional Owners and enable the preservation of Gulgnay culture and language through sharing and recognition.
- Preserve, foster, share, promote and celebrate the unique and diverse arts, culture and heritage of our region.
- Showcase and develop regional artists in all mediums by developing a place to meet, create, display, perform, share, interact, learn, be challenged, intrigued and inspired.
- Leverage of the uniqueness and opportunities provided by its location within the Wet Tropics World Heritage Area and our tropical rainforest backyard.
- Build cultural and community capacity, identity and spirit. Developing a sense of place, fostering civic pride and creating a welcoming space that supports diversity, equity, inclusion and belonging.
- Positively contribute to the social, cultural and economic prosperity of the region by supporting and empowering community members to connect, participate, contribute and thrive. Thereby improving the liveability of the region and the quality of life for all Cassowary Coast residents.

Summary

The development and construction of an **Arts and Cultural Precinct for Tully** in the heart of the town would bring multiple cultural, economic, educational and social benefits to the town and the region, enhancing liveability and well-being within the community. This proposal aligns with Tully 4854: looking forward advocacy group, Tully and District Chamber of Commerce, Tully100, Tully Support Centre Inc. and Cassowary Coast Regional Council regional objectives and objectives laid out in the CCRC Corporate Plan 2021-5.

An **Arts and Cultural Precinct for Tully** will also bring significant benefits to the Gulgnay people, as the Traditional Owners of the Tully Region, positively contributing to the preservation of their culture and language. The precinct would also contribute to recognition, reconciliation and truth telling for all Indigenous peoples.

The Tully community is currently developing a program of events to commemorate 100 years of non-Indigenous settlement in the town to take place during 2024. This is an opportune time to commit to a community facility to mark the event and look to the future, to create a legacy which will service present and future residents and honour those who have gone before us.

Contributors

This document was compiled by Dr Valerie Keenan with input from within the community and beyond. Interest and support for the project is growing daily. Currently the **Arts and Cultural Precinct for Tully** working group includes: Valerie Keenan, Shane Greenwood, Marcus Thomas, Clarence Kinjun, Christine Jenkins, Helen Pedley, Robyn Batts, Leigh Pentecost, Shane Muriata, Ann Wilkinson, Lawrie Martin, Kerry Robertson, Jeanette Clayton, Carmen Pedroni and Dr Valerie Boll.

These people come from backgrounds including: community support and engagement; library, museum and gallery expertise; theatre; small business; archaeology and ethnography; Traditional Owners; Aboriginal cultural knowledge and heritage; education and early childhood; governance; journalism and authors; artists and arts practitioners; historians; long term residents and rate payers.

Next Steps

The next stage of this project will be to undertake a preliminary feasibility assessment. This assessment will be utilised to submit a detailed proposal to Government to seek funding to develop a comprehensive business case.

To undertake the preliminary feasibility assessment the **Arts and Culture Precinct for Tully** working group will continue to:

- Support the Gulgnay people to realise their vision for the safe storage, display and preservation of their culture and cultural objects.
- Raise awareness of the need for this facility, its benefits and sustainability.
- Engage with community and key stakeholders.
- Conduct monthly meetings to ensure transparency and accountability of the working group.
- Engage with the CCRC to identify potential locations, planning and budget considerations.
This will include:
 - Obtaining a formal letter of support.
 - Outlining potential CCRC in-kind support (e.g. town planning, works).
 - Undertake a review of existing CCRC assets to assess their suitability for the project.

The development of a comprehensive business case will include:

- Comprehensive community and stakeholder engagement.
- A thorough investigation of potential facility sites.
- Engaging specialists to meet current best practice and industry standards in the design, construction and operation of an Arts and Cultural Precinct.
- The development of an 'Artists Impression' of the precinct.
- The formation of a community led incorporated association to champion the project (an incorporated association would be eligible for grants to assist with detailed investigations).

Guiding Principles

The development, implementation and realisation of the project vision will be guided by the following principles:

Reconciliation and Truth Telling

The **Arts and Cultural Precinct for Tully** will:

- Positively contribute to reconciliation, cultural respect, heritage and healing with local Traditional Owners, the Gulgnay people.
- Actively support Indigenous arts and cultural engagement across the CCRC region through initiatives including a dedicated office for the Gulgnay people, the Traditional Owners of the Tully region.
- Benefit Traditional Owners and Indigenous artists by actively preserving culture through sharing and recognition.
- Caretaking and preserving Cultural objects that have been handed back to Traditional Owners for current and future generations. There is currently with no safe storage or display options to house these items.
- Facilitate cultural connection for Aboriginal and Torres Strait Islander young people.
- Encourage and support young Indigenous artists to carry on their cultural and artistic traditions into the next generation.
- Improve awareness and understanding of Aboriginal and Torres Strait Islander cultures.
- Engage students in arts, cultural and heritage learning through school excursions, activities and events, positively contribute to education outcomes for students.

Arts and Culture development

The **Arts and Cultural Precinct for Tully** will

- Provide creative and professional development opportunities for local and regional artists.
- Facilitate regional exhibitions, events, seminars, displays and workshops,
- Provide rehearsal spaces for theatre and music groups.
- Provide artists opportunities to generate income through gallery sales, retail outlet and exhibition and performance admission fees.
- Encourage artists from across Australia to the area for creative exchanges and learning.

Inclusion and Connection

The **Arts and Cultural Precinct for Tully** will

- Contribute positively to placemaking and civic pride, creating a welcoming space that supports diversity, equity, inclusion and belonging.
- Provide positive social inclusion and social interaction opportunities, bringing the community together.
- Provide a strong connection with the local environment.

- Generate employment and training opportunities for Aboriginal and Torres Strait Islander community members, community members from Cultural and Linguistically Diverse backgrounds, young people, people with a disability and older persons in our community.
- Improve cultural awareness and understanding across cultures and celebrate our multi-cultural community across the region.
- Strongly align with the Queensland Government's *Communities 2032* plan create to vibrant, inclusive, cohesive, accessible and resilient communities.

Collaboration

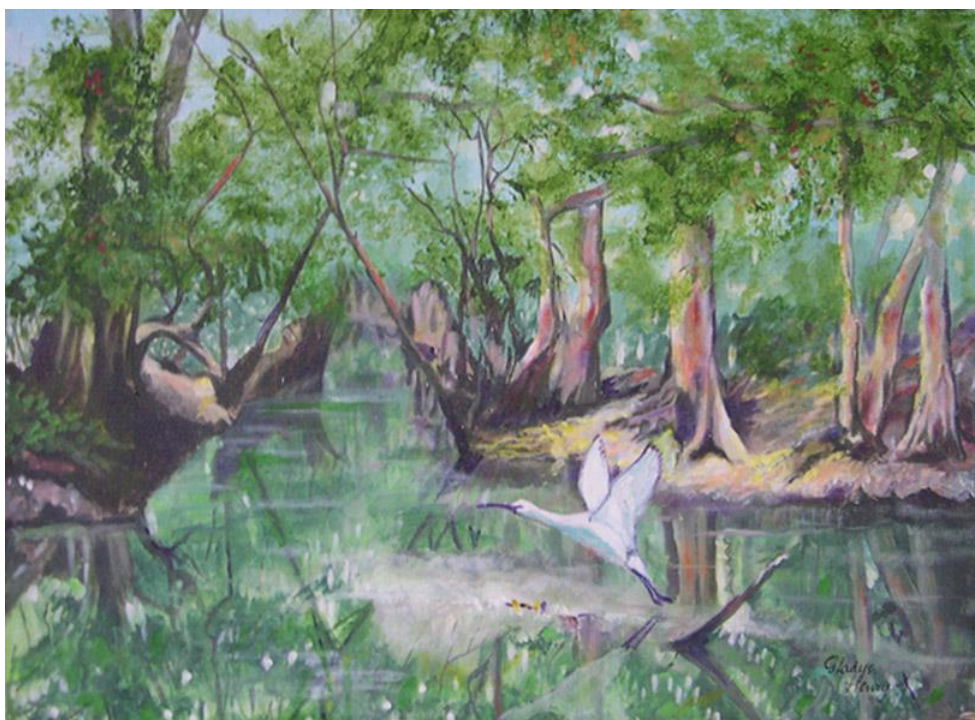
As a community led project, the ***Arts and Cultural Precinct for Tully*** will

- Collaborate with all levels of government, small business, community groups, individuals, cultural groups, Aboriginal and Torres Strait Islander peoples and the Gulgnay people as the Traditional Owners and custodians of the area.
- Work together with all stakeholders, to achieve a shared purpose, and create a unique Arts and Cultural Precinct for Tully.
- Ensure the broader community is invited, and has access to meaningful opportunities, to provide input at all stages of the project consistent with the International Association for Public Participation (IAP2) guidelines for community engagement.
- Generate opportunities to develop partnerships in arts and culture, reconciliation, history, heritage, museums, performing arts, environment, education, creativity, social interaction, youth engagement, tourism, innovation, small business and local government.

Sustainability

The ***Arts and Cultural Precinct for Tully*** will

- Be economically and environmentally sustainable ensuring the long-term viability of the facility and the positive benefits for the community and the region.
- Implement best practice and industry standards in design, construction and operation.
- Create a dedicated retail outlet that enhances local visitor and tourism experiences; supports local artists through the sale and promotion of their wares; promotes the region's arts and cultural outputs; and contributes to the local economy.
- Complement and enhance, existing arts and cultural activities in the region.
- Generate volunteering, skills development and training opportunities through the facility.
- Deliver economic benefits for small businesses in the broader community, generating employment opportunities and economic benefits throughout the region.
- Leverage its location within the Wet Tropics World Heritage Area and natural environments.
- Promote tourism and increase visitor numbers for Tully and the surrounding areas.
- Establish an independent incorporated community association to oversee the development and ongoing operations of the facility.



Bird on the Murray River – Gladys Henry

The positive impact of the Arts in Queensland

The Arts unites, creating a shared understanding and generating respect for culture and individual difference at a community level. While providing significant positive benefits to individuals. Evidence clearly demonstrates the positive impact of the Arts in Queensland on Aboriginal and Torres Strait Islander community members. In particular Aboriginal and Torres Strait Islander young people, their connection to cultural, identity and positive self-image. In addition, the Arts positively impacts on the social, emotional and economic wellbeing of communities, small business, individuals and families.

National Arts participation survey

An Australia Council for the Arts (Federal) National Arts Participation Survey conducted in 2019, *Creating our Future*, identified that 98 per cent of Queensland residents engage with the arts in a variety of forms and that 68 per cent attend live events. The survey further found that Queensland residents now believe the arts have a 'big' or 'very big' impact on:

- their ability to express themselves (64%, up from 58% in 2016)
- stimulating their minds (62%, up from 56% in 2016)
- child development (62%, up from 53% in 2016)
- their ability to think creatively and develop new ideas (60%, up from 56% in 2016)
- their understanding of other people and cultures (60%, up from 52% in 2016)
- helping them deal with stress, anxiety or depression (55%, up from 47% in 2016)
- their sense of wellbeing and happiness (55%, up from 46% in 2016)
- shaping and expressing Australian identity (51%, up from 45% in 2016)
- building creative skills that will be necessary for the future workforce (46%, new in 2019)

— *bringing customers to local businesses (40%, up from 34% in 2016).*

The survey also revealed that *the top three priorities for public funding of the arts for Queensland are:*

— *ensuring children and young people have access to art and creative experiences to support learning and development (75% ranked this in their top three priorities);*

— *ensuring free or low-cost events are available (72% ranked this in their top three priorities); and*

— *ensuring art and creative experiences are available to support people's health and wellbeing (53% ranked this in their top three priorities).*

There is no doubt that the development of an **Arts and Cultural Precinct for Tully** would address these priorities **and** bring multiple direct and indirect social and economic benefits to the area.

[Australian Public Galleries Snapshot](#)

An Australian Public Galleries Snapshot published in 2019 defined Australia's public galleries as an intrinsic part of our social fabric, engaging audiences with art, ideas and culture. They stimulate learning, debate and critical thinking; encourage creative expression; and enrich the social, economic and cultural wellbeing of our country's metropolitan, regional and remote communities.

The 2019 Australian Public Galleries Snapshot prepared by Museums & Galleries Queensland and Public Galleries Association of Victoria on behalf of the National Public Galleries Alliance (NPGA) captured data for 170 of Australia's estimated 434 regional and public galleries. The report identifies that small-to-medium galleries in Queensland attracted 1,340,630 visitors annually, not including the Queensland Art Gallery (Gallery of Modern Art). Had more Queensland regional galleries participated in this data collection, the number of visitors would have been far greater.



Cassowary at Muulga – V Keenan 2022 ink on paper

Economic benefits for Tully and the Cassowary Coast

The Cassowary Coast is currently experiencing a generational shift away from the low and unskilled agricultural industry to a semi and highly skilled service-industry based economy. An **Arts and Cultural Precinct for Tully** would generate significant economic benefits for Tully and the entire Cassowary Coast through increased tourism, longer visitor retention, and flow on benefits through employment, small business and associated services.

The Museums and Galleries Queensland audience evaluation *Guess Who's Going to the Gallery? Queensland Report* (2013) indicates, 10 per cent of visitors in Queensland spend one to two hours, and 6 per cent spend from two to more than three hours visiting galleries, and that of the latter 16 per cent represents only international and interstate visitors, we would expect increased visitation numbers for the region.

As indicated in addition to the increased number of visitors to the region generated by an **Arts and Cultural Precinct for Tully**, evidence suggests that visitors would likely spend longer in the region generating economic activity. This will benefit small businesses through accommodation, food and beverages, grocery, fishing and sporting goods, clothing and retail, mechanical and maintenance, and so on. This increased economic activity will lead to increased employment and regional prosperity.

Social benefits for Tully and the Cassowary Coast

The **Arts and Cultural Precinct for Tully** project aligns with the Queensland Government's Communities 2032 plan create to vibrant, inclusive, cohesive, accessible and resilient communities by supporting and empowering community members to connect, participate, contribute and thrive. The Museum and Galleries Queensland Report (2013) highlights the importance of galleries in our communities as cultural hubs, providing safe spaces for people to connect improving community cohesion and increasing resilience, as well as inspiring learning, debate, critical thinking and creative expression.

The precinct will also positively contribute to placemaking and civic pride, by creating a welcoming space that supports diversity, equity, inclusion and belonging. The Tully Arts and Cultural Precinct will enable the preservation and sharing the unique and diverse arts, culture and heritage of our region. Contributing positively to improving cultural awareness and understanding across cultures and the celebration of our multi-cultural community and history across the region.

Finally, an **Arts and Cultural Precinct for Tully** will generate employment and training opportunities for Aboriginal and Torres Strait Islander community members, community members from Cultural and Linguistically Diverse backgrounds, young people, people with a disability and older persons in our community. These opportunities will create further opportunities for social engagement and resilience building through equitable employment, training and skills development experiences.

Cultural benefits for Tully, the Cassowary Coast and the Gulgnay people

The **Arts and Cultural Precinct for Tully** project will be led by the Gulgnay people as the Traditional Owners and custodians of the land. This project has been developed, in part, in response to concerns raised by Gulgnay Elders regarding the preservation of Traditional Objects that have been returned to them. Currently there is no safe place to store these items. The precinct would also provide a dedicated office for the Gulgnay people.

However, the Gulgnay Elders have also highlighted that in order for their culture and language to thrive as a living culture it is important for these items to be shared with the community, visitors and importantly their young people. Sharing also brings recognition of the Gulgnay culture, improves

awareness and understanding, and highlights the wrongs of the past. In this way the Tully Arts and Cultural Precinct will positively contribute to reconciliation, cultural respect, heritage and healing with local Traditional Owners, the Gulgnay people, and Aboriginal and Torres Strait Islander peoples in our community.

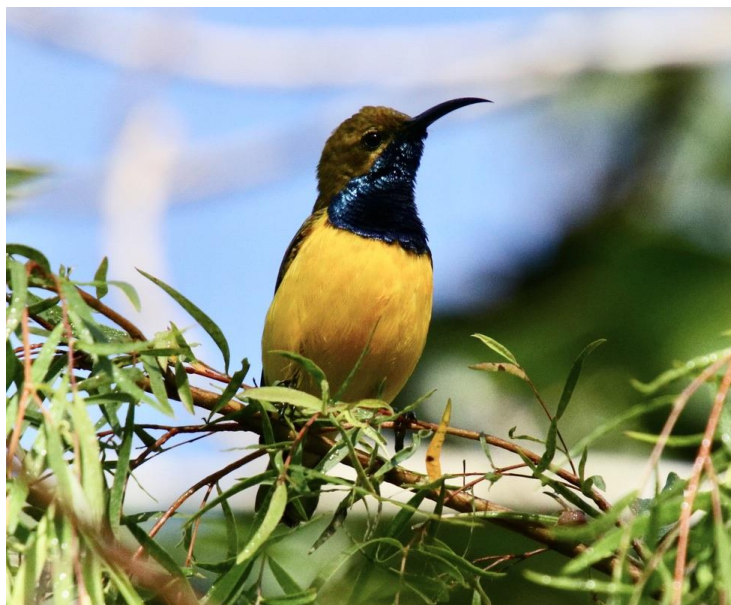
The **Arts and Cultural Precinct for Tully** will also actively support and benefit Indigenous arts and cultural engagement across the Cassowary Coast region. Access to arts and cultural learning for young people has been highlighted by early education and childcare providers, primary and secondary schools and community groups within the Cassowary Coast.

The precinct will create local accessible opportunities to engage students in arts, cultural and heritage learning through school excursions, activities and events, positively contributing to education outcomes for students.

Why Tully

Tully sits within the traditional country of the Gulgnay people, one of a group of rainforest Aboriginal people, whose connection to country, language and culture is distinct within the Wet Tropics, an area which comprises just 2 per cent of the Australian landmass.

There is a diversity of cultural groups who have made their homes in the area. Tully has a proud tradition of inclusion and numbers peoples with Italian, Sicilian, Finnish, German, American, Canadian, Sikh, English, Irish, Scottish, Greek, Macedonian, Serbian, Russian, Chinese, Philippines, Papua New Guinea, Thai, Tongan, Cook Island and South Sea Island backgrounds and others. Further-more there is a continuing stream of back-packer workers coming from across the world to work on farms in the local area.



Olive Sunbird - Photo by V Keenan 2022

A place with unique character and charm and a place of great natural beauty located in the Wet Tropics, Tully has the potential for economic growth, to build cultural capacity, strengthen our community and attract significant tourism dollars. Tully Gorge, Alligators Nest, Sugar Mill Tours, nearby beaches all bring people to the area but a cultural precinct, such as is being proposed in this document, will encourage visitors to stay longer and attract visitors who might not otherwise visit.

The Cassowary Coast Regional Council (CCRC) Local Government Area (LGA) includes the 3 statistical area level 2s (SA2's) of Innisfail, Johnstone, and Tully. Within the region, the Tully SA2 had the largest population with 11,243 persons, and the largest average annual growth rate of 0.6%. (see **Attachment A: Regional Socio-economic snapshot**). Tully is centrally located within the CCRC LGA, providing equitable access across the CCRC region. For residents south of Silkwood, Tully is significantly closer than Innisfail (see **Attachment B: Distance between major centres**).

Tully is also centrally located between Cairns and Townsville on the Bruce highway, along the main train and bus routes. Local freight companies operate to Townsville, Cairns and beyond simplifying supply routes. In addition, a dedicated and specialist arts transport truck offers a regular monthly service between Brisbane and Cairns, supporting travelling exhibitions. Being centrally located between Cairns and Townsville, the two major cities in the north, would also provide the Tully Arts and Culture Precinct the opportunity to create new and strategic alliances with these centres.

There are 77 local government areas in Queensland, with at least 58 of these having regional galleries, many of which exist in communities with significantly smaller populations than the Cassowary Coast Regional Council local government area which has a population of 29,605 (2022 Census). Regionally, Charters Towers Regional Council (11,981 persons), Hinchinbrook Shire Council (11,089 persons), Tablelands Regional Council (26,808 persons) all have successful regional galleries which positively contribute to the liveability and tourism of these regions. Many artists and arts practitioners who live in the CCRC region would benefit from a cultural hub of this sort. The lack of an appropriate venue constrains a vibrant arts and cultural community in the CCRC region.

Community surveys consistently highlight the need to preserve the regions history, improve social and cultural opportunities, improve tourism and create economic activity for small businesses and employment (see **Attachment C: Benefits – economic, social and Traditional Owner**).

In addition, there are considerable and significant collections of historical, arts and Traditional culture held in the Dorothy Jones Library in Tully. However, they are largely inaccessible and not stored in optimum conditions. A complex which aligns with Australian museum, gallery and theatre best practice guidelines would provide storage, display and usage options that would ensure longevity of the collections as well make them more accessible for ratepayers and visitors now and into the future.



Parade in Butler Street - Henry Collection circa 1940s

Where in Tully

The development of an **Arts and Cultural Precinct for Tully** could be achieved by:

1. Construction of a standalone purpose built facility
2. Renovating and retrofitting an existing building, or
3. A combination of the two where an existing underutilised building is retrofitted and extended to provide a facility outlined under this proposal.

Construction of a standalone purpose built facility

There are several suitably sized parcels of land available on the Bruce highway on the approaches to Tully. These sites offer excellent visibility and access from the highway but have no support/adjacent services such as shops, car parks etc. expanding the scope of design. This area is also semi-industrial with the potential to distract from the ambience of the building. The location of these blocks outside of the Tully CBD is not as conducive to keeping tourists within the Tully area and creating economic benefits for the community as a facility located closer to the Tully CBD.

Access to suitable sized parcels of land within and in close proximity to the Tully CBD is limited. The first parcel is owned by the Tully Sugar Mill at the bottom end of Butler Street. However, it is located in close proximity to the existing trams lines and based on initial enquiries, is unlikely to be made available for purchase.

The second vacant block is located between the civic centre and the library that had previously been identified by CCRC for an arts facility and meets the requirements of this proposal. In addition, the site offers the potential to meet the third criteria where a combination of two options where an existing underutilised building such as the Civic Centre is retrofitted and extended to provide a facility outlined under this proposal.

Renovating and retrofitting an existing building

A review of available buildings in the area identified only three buildings large enough to house An Arts and Cultural Precinct for Tully:

- the JP Byrne Indoor Sports Stadium (Igloo) and attached Mullins Building,
- the Midtown Arcade on Butler Street, and
- the CCRC Tully Civic Centre and associated vacant land.

JP Byrne Indoor Sports Stadium (Igloo) and attached Mullins Building

Both the Igloo and the Mullins Building are located in the Tully Showgrounds and were identified by the CCRC as underutilised assets through its Asset Revitalisation program in 2020. The Igloo provides a large open area (44m x 22m) and the Mullins Building (30m x 15m) also includes toilets and a kitchen. Both buildings are connected via a covered raised walkway.

It should be noted however, that the Tully Showgrounds is subject to flooding and the Mullins Building has been identified as containing Asbestos. Both buildings are also currently in use several days a week (Tully/Mission Beach Pickleball utilising the Igloo, and the Tully Youth Centre utilising the Mullins Building). These buildings would require substantial refurbishment to suit the needs of an Arts and Cultural Precinct, plus rehousing of the existing user groups.



JP Byrne Indoor Sports Stadium and attached Mullins Building - Photo M Thomas 2021

The Midtown Arcade is a covered arcade with a series of small retail shops that, with the exception of the two facing the main street, have been vacant for some time. Assuming that all vacant shops could be purchased together, they could be easily interconnected to create an art gallery and museum and the covered entrance incorporated within the design. While this option may appear somewhat out of left field, it would be the lowest of the three options to retrofit and the quickest to bring online.



Mid-Town Arcade Tully – Photo Queensland Globe 2023

The Tully Civic Centre is owned by CCRC and is located in close proximity to the Tully CBD. The Tully Civic Centre is an iconic design that would suit the establishment of an arts facility but would require substantial refurbishment plus rehousing of the existing employees. However, as highlighted above the Civic Centre could be retrofitted and extended to provide a facility outlined under this proposal without negatively impacting on the CCRC service provided or existing staffing.



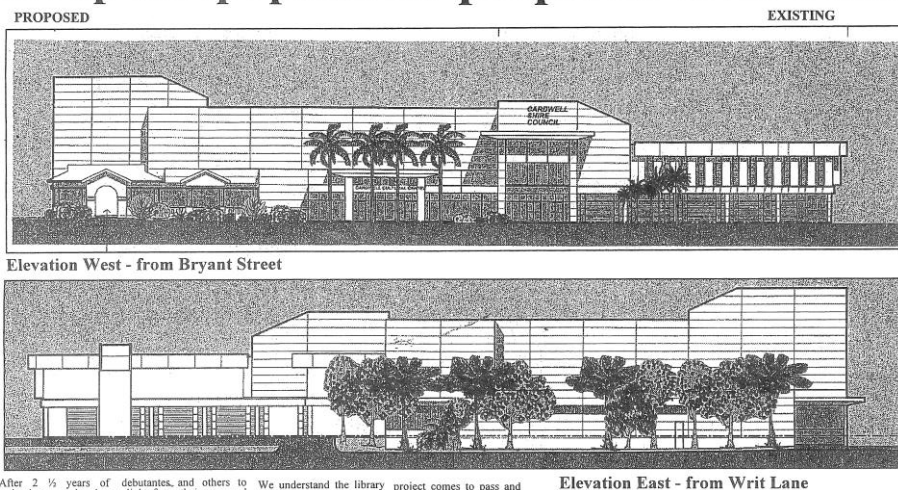
Suggested location between Tully Civic Centre and the Dorothy Jones Library in Tully. Photos V Keenan 2023

The sites outlined above will be reviewed as a part of the development of a comprehensive business case. Given that a significant amount of work, including design and community consultation, has been previously undertaken on the site next to the Tully Civic Centre to confirm its suitability for an arts facility, it presents itself as an initial front-runner for more detailed consideration.

The **Arts and Cultural Precinct for Tully** working group has also identified that the CCRC Tully Civic Centre and associated vacant land presents a number of advantages, including:

- centrally located, within easy walking distance of the main central business district of Tully (Butler Street). Maximising the economic impact and improving access to the facility.
- creating a link existing CCRC assets and optimise staff, resources and asset management.
- having two street access and ample parking to the rear of the site.
- easy access to facilities such as police station, courthouse, primary schools and kindergarten.
- within walking distance of the Banyan Transit Centre and the Tully Railway station.
- not being subject to flooding, has good drainage and has less chance of significant cyclone damage or sea flooding as it is located well above sea level.

Group accept plans for proposed Civic Centre



Tully Times 30th May 2002

Design considerations

Sustainability is key to the effective use of available funding and facilities. It is also essential in ensuring that the facility is not only well utilised but remains financially viable and an economic draw card to the region (see **Attachment D: Sustainability**).

Best practice and multifaceted approach for a double fronted, two storey, climate controlled, acoustically considered museum and gallery facility, history room, theatre with seating for 250 people, café, gallery shop, meeting room, workshop space/wet area, customer friendly multi-use space which pays attention to weather implications and useability for staff and visitors.

Disability access and covered set down points for people with disabilities, the elderly and infirm should be encouraged. Energy efficiency and ergonomic design should be inherent in the design. Visitors to the facility would expect to freely move from one space to the other enabling visitor numbers and use of current and future infrastructure. After-hours access should also be available for evening and weekend events.

Public arts projects by local artists should be included into the design/build element of the project. Preference should be given to architects, engineers and tradespeople resident in the Far North who have a proven track record with practical solutions for tropical conditions, tropical living and sustainable outcomes. The facility should be visually attractive with good acoustics, yet ensure that it is user friendly, practical and fulfills the brief.

Clear highway signage should be included in the development.



Bellenden Homestead – Henery Collection circa 1930s

Our Artistic community

Feedback from arts and cultural practitioners in our community. Further stakeholder feedback is outlined in **Attachment G**.

Helen Pedley, Author, Tully

19.10.23

Every community should have it's own museum. Every community should have a safe place where people know they can leave things that tell the local stories that they treasure; the stories that encapsulate what it means to live here. A place where cherished items from the past will be cared for and also available for everyone to view and appreciate.

Memories and histories are integral to our being. The past is inherent in all we do, and museum objects, displays and exhibitions can bring this to mind and enrich understanding, awareness and empathy.

Objects convey so much more than words on a sign, in a book or on a website. Objects trigger memories – my Aunty had one of those, my Grandfather had one that he kept in the shed but it deteriorated and we had to toss it. Seeing a “Mrs Potts iron” and a washboard and tub colourfully and tangibly conveys why it took folk all day to do their laundry in the old days. Artefacts and relics give us a feeling of continuity reaching back through our parents to forebears otherwise not remembered.

The past is where we have come from, whether it be inconvenient and messy or glorious and honourable. The past enhances the world around us. Projecting into the unknown future from the basis of the legacy of our past can be deeply reassuring. With a community museum we can show the kids the way we were; we can share with visitors how we did things around here and we can take pride in looking after objects that would otherwise be lost forever.

Having no museum is limiting and sees us lacking as a community.

**Nina Lavarini Dawson, Artist and Artswoker, Mission Beach
October 2023**

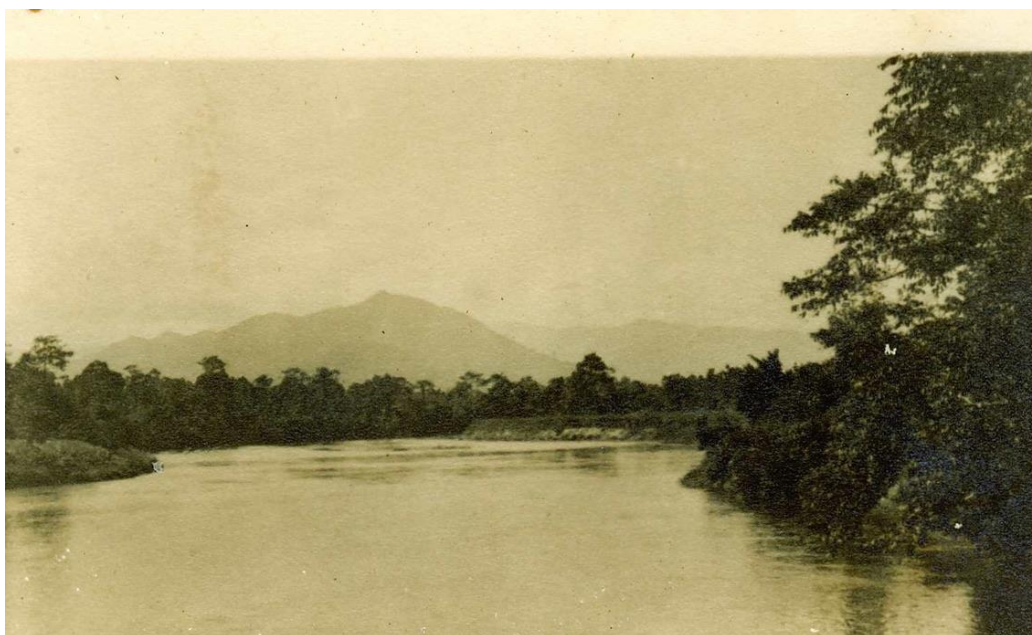
I would like to support the proposal for an Arts and Cultural Precinct in Tully. As a full-time artist and artswoker living in the Cassowary Coast Region I can envisage the huge benefits of such a facility for the local community and my own arts practice. I regularly run a range of textile design workshops in the local area and in Cape York, so it would be great to have a close venue where I would be able to share my creative skills with the local community in Tully and the region. The exhibition space would also support artists like myself to show their work locally and to wider audiences.

**Kerry Robertson, Artist, Cardwell
October 2023**

A Cultural Complex would mean numerous opportunities.

- *An opportunity to view art exhibitions of all types of mediums and to participate in art exhibitions that would be held by the many group and individual artists that live in the region and neighbouring regions.*
- *An opportunity to be entertained by live performances, without the cost of accommodation etc for travelling out of town.*
- *The opportunity to view and learn more about local history from both indigenous and non-indigenous communities of the area.*
- *An opportunity to relax and socialise with friends and the opportunity to meet others. All at the one place.*

This is an opportunity for everyone in the region to have an equal opportunity to participate in many cultural events.



Tully River looking towards mount Tyson – Henry Collection circa 1920s

Dr Valerie Boll, El Arish

October 2023

An Arts and Cultural Precinct in Tully would provide a space for the community (between Cardwell and Innisfail) to experience and engage with various forms of art and culture, be a hub for creative activities, workshops, performances and events, as well as a place for artists to work and showcase their work.

It would help promote community development, social cohesion and economic growth. It would help strengthen a sense of place and community identity, increase individual and community confidence and provide opportunities for networking. It would also help to attract a more diverse local public and also tourists in the area.

Such a facility would provide a climate-controlled space in the Tully area to present exhibitions/displays and also store archival material (currently held in Innisfail and being nearly inaccessible).

Being involved with the Tully 100 celebrations (oral history sub-group) and the Mission Beach Historical Society, there is currently nowhere to present/display historical information and heritage.

This project aims:

- *to build community capacity through promoting self-esteem, community interaction, links and bridge gaps between generations,*
- *to promote intergenerational exchange of knowledge and culture and provide learning opportunities,*
- *to facilitate cultural connection and transmission of culture of and with Traditional Owners through community engagement and cultural expression.*

Jeanette Clayton, School teacher (retired) Tully

October 2023

We are very lucky that there is passion within the community for an Arts/Cultural precinct. It is desperately needed. I think after a while we become complacent when nothing happens to proposals and we eventually accept the situation. The proposal has very compelling reasons for the development and will be significant in influencing the Council. It will be hard to refuse. We will have to find the funds somewhere. I feel the time is right for success with the desire of the citizens earlier to have a building in the proposed position and with the Centenary coming up - that will be a positive influence. This is going to renew the energy of the town.

Daryl Dickson, Artist and Author, Mungarru Lodge Sanctuary, Girramay Country

October 2023

I fully support the development of an arts and culture precinct in Tully. I earn my living and enrich my life through my arts practice on Girramay Country in the Kennedy Valley and I have had a long-term commitment to supporting and promoting art on the Cassowary Coast.

Arts, culture and historical precincts enrich our communities and I believe very strongly that these should be an essential part, in various forms in all our population centers within the Cassowary Coast.

The establishment of an inclusive and significant arts and cultural precinct to include a Regional Art Gallery, museum, theatre, gallery shop, meeting Room, workshop/creative spaces, indoor/outdoor recreational space and offices for the Gulgnay Traditional Owners is a worthy aspiration for the Cassowary Coast Region.

Arts and Culture tell our stories, these precincts are places of creativity and imagination; they enrich our lives and help us understand who we are and where we have come from. This is an ideal place for the Cassowary Coasts First Peoples to share the story of their country, for older citizens to remember and reminisce and a space where our young learn to be creative and how to tell stories. A place to incubate the artists and performers of the future. It will enrich the community by providing places for music, visual arts and theatre. Places that are valuable to locals and tourists – enriching their experience, understanding of the far north.

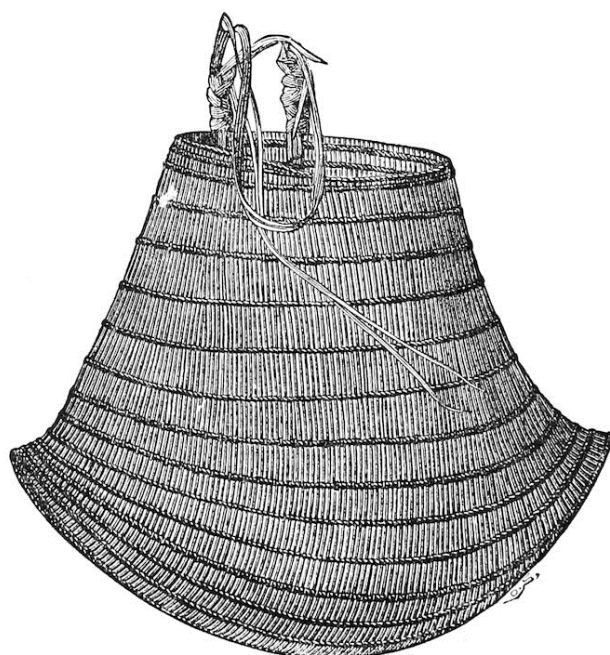
Arts and Cultural Precincts do not have to be large spaces, they can be intimate performance areas and places of ephemeral exhibitions and storytelling- I look forward to hearing of this plans progress.

Jen Downs, past CCRC Councillor and business woman, Mission Beach

October 2023

Our region - Cassowary Coast Regional Council area is an incredibly beautiful and diverse region that has inspired artists since time began. Such a facility as is proposed, will bring many benefits - economically and socially for our whole region.

The varied works and stories that artists have produced, deserve to be preserved and displayed in a purpose-built gallery for today's and future generations to understand and to enjoy. Artistic heritage needs to be treasured - to educate, inspire, provide wonder, and to preserve.



Bicornual basket – used by Traditional Owners in the Wet Tropics

Valerie Keenan PhD, Artist & Author, Murray Upper

October 2023

The Tully I remember when I was growing up had two picture theatres one of which also hosted stage plays and musical evenings. There was the Buff's Hall, a dance hall above the Sunkist Café, places to meet and enjoy life. There were regular art, music and dance classes and exhibitions, dances and balls, and a thriving largely integrated community. Over the years we have lost these facilities and there are now limited places to experience or be involved in cultural activity as a community.

I live on Bilyana Road, Murray Upper. It is about eight kilometres in length and on this road there is a pianist, a musician, a visual artist, two journalists and authors, and myself as a visual artist/author. That is six adults who provide cultural output and I'm guessing at least double that for others who support cultural activities. And this doesn't include the children.

An Arts & Cultural Precinct in Tully would go a long way to addressing this and provide opportunities for community gatherings, social interaction and somewhere to locate our history and showcase our region and our artists.

Murray Massey - Journalist & author, Cardwell

October 2023

Desperately needed. A vibrant artistic and cultural spirit is at the core of the most successful communities. It was a role once filled by private and state schools, primary and secondary in North Queensland, under which all towns, small and large, often combined efforts to stage spectacular concerts and balls. Music was taught in homes and many piano teachers worked privately. Schools promoted the art of costume design with an annual 'fancy dress ball'. This era, mainly before the arrival of television, delivered some of the richest history in our region but it lacked a full appreciation of an even richer Aboriginal and Islander culture for which Tully and surrounds has now established an international reputation. We need a centre like this to display our art to the world and to enrich the spirit of our communities in the delivery of it.

Leigh Pentecost, Archaeologist, Bilyana

October 2023

I just love museums and have travelled the world to see them. Museums serve to remind us of the past and can allow us to glimpse into the future.

Shane Greenwood, General Manager, Tully Support Centre Inc.

October 2023

Cultural and the Arts are essential to the identity of all communities. The ability of all community members regardless of cultural background, economic prosperity, ability or disability, age or gender to fully engage in and be a part of their community is essential to the identity of all individuals. This project will create economic, social, cultural and regional prosperity for our community. It will be the foundation on which the next 100 years is built.

Carmen Pedroni, Director/Educator, Tully Kindergarten and Preschool

September 2023

Tully Community Preschool and Kindergarten strongly supports the proposal for a multi-use arts and cultural precinct in Tully for several reasons.

Since Cyclone Yasi, the township of Tully has endured numerous 'blows' to their town causing the town of Tully to gradually lose its 'heart'.

The addition of a multi-use arts and cultural precinct to the township of Tully would help Tully to find its 'heart'/identity again. Tully Community Kindy could play a central role in the rediscovery of Tully's identity as a town by being regularly involved in any events the Arts Precinct should offer. The suggested location of the precinct would allow us to walk to it should the situation arise.

According to the AEDC data for the area of Tully, 19.4% of children in our area were developmentally vulnerable in the area of emotional maturity. This statistic is extremely concerning considering that this includes behaviours such as aggressive and impulsive behaviour and being prone to disobedience. By introducing children to various Arts opportunities that would exist as a result of building an Arts precinct, some of these behaviours may be addressed and potentially reduced.

Tully Kindy is a C&K Kindergarten. The organisation of C&K strongly supports the use of the Arts to help children learn and grow during their early childhood years. The Arts helps children to express themselves and their ideas. It develops their skills in problem solving and collaboration, while helping them to develop patience, resilience, and confidence. When children engage in the Arts, they improve their gross and fine motor skills, develop communication and language skills, increase creativity, and improve self-esteem.

Our Kindergarten would regularly use the proposed Arts space for numerous events within our Kindy program. Our annual Kindy concert and rehearsals could be held there, and we could attend various arts workshops held there throughout the year. The inclusion of events from the Arts precinct in our program would have a flow on effect to the families of the area by raising the profile of the facility and helping families to become familiar with the services and benefits that it can provide.

Support to develop the project

There are a number of organisations in Queensland and nationally who could provide professional advice and support to the community in realising a dedicated arts and cultural precinct in Tully.

These include but are not limited to:

- Arts Queensland,
- Museums and Galleries Queensland,
- Public Galleries Queensland,
- Queensland Museum Network,
- Queensland Art Gallery, Gallery of Modern Art,
- Regional Arts Services Network (RASN),
- Arts Law Centre of Australia,
- Australian Institute of Aboriginal and Torres Strait Islander Studies (AIATSIS),
- Creative Australia,
- Regional Arts Australia,
- Flying Arts Alliance.

Attachment E includes outlines a list of potential or existing stakeholders.

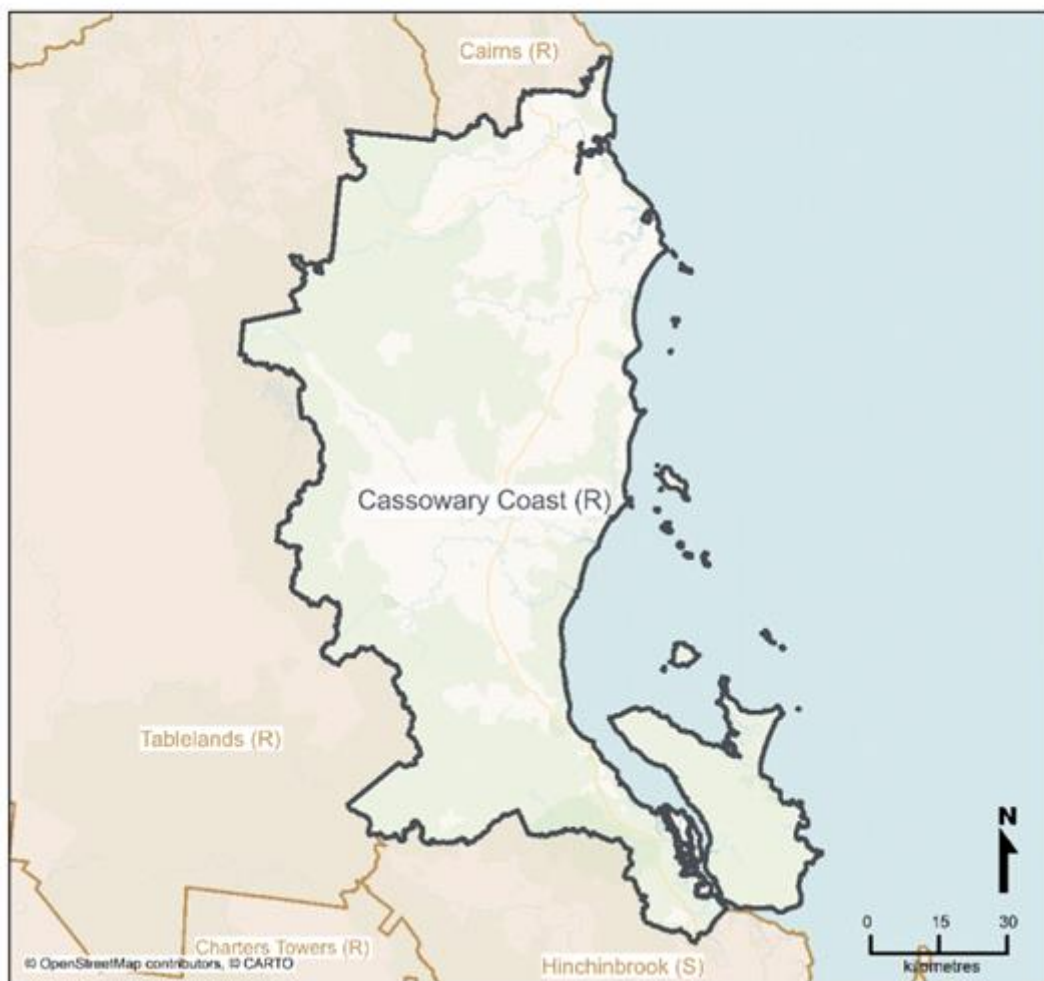
Attachment A: Regional Socio-economic snapshot

Regional overview

The following regional snapshot has been developed using information available through the Queensland Government Statistician's Office, Queensland Treasury, Queensland Regional Profiles: Resident Profile for Cassowary Coast (R) Local Government Area (LGA).

Queensland Government Statistician's Office

Figure 1 Map of Cassowary Coast (R) Local Government Area (LGA) (ASGS 2021)



Cassowary Coast (R) Local Government Area (LGA) has a total land area of 4,687.8 km², with a total estimated resident population of 29,605 persons as of 30 June 2022, with an average annual growth rate of 0.1%. The Australian Bureau of Statistics classifies 92.9% of the Cassowary Coast (R) population as Outer Regional, with the remaining 7.1% classified as Remote according to the Accessibility/Remoteness Index of Australia classification. The

Cassowary Coast (R) has a higher-than-average percentage of Aboriginal and Torres Strait Islander residents with 11% compared to a State average of 4.6%.

The Cassowary Coast (R) Local Government Area (LGA) includes the 3 statistical area level 2s (SA2's) of Innisfail, Johnstone, and Tully. Within the region, the Tully SA2 had the largest population with 11,243 persons, and the largest average annual growth rate of 0.6%.

Tully SA2 Socio-economic data

The Socio-Economic Indexes for Areas (SEIFA) are a measure of the social and economic conditions of geographic areas across Australia. The index focuses on low-income earners, relatively lower education attainment, high unemployment, and dwellings without motor vehicles.

Within the Cassowary Coast (R), 77.4% of community members fell within the two most disadvantaged quintiles, compared to state average of 40%. This rises to 81% within the Tully SA2. **This disparity has risen 7.7% since 2015 (73.3%)**. With no community members fall into the least disadvantaged quintile, compared to a state average of 20%.

Additionally, the percentage of individuals in the Tully SA2 in the 4th Quintile, representing those least disadvantaged in the community (as no residents fall within the 5th Quintile) has dropped a further 3.8% over the last 12 months to 1.6%.

SEIFA Quintile	Tully SA2	Queensland
Quintile 1 – most disadvantaged	39.9%	20.0%
Quintile 2	41.1%	20.0%
Quintile 3	17.3%	20.0%
Quintile 4	1.6%	20.0%
Quintile 5 – least disadvantaged	0.0%	20.0%

(source: Queensland Regional Profiles, Queensland Government Statistician's Office)

In addition, according to the Queensland Government Statistician's Office within the Tully SA2:

- 9.9% of **families live on less than \$33,800.00 P.A.** or \$650.00 a week compared to a State average of 6.9%.
- **Median family income** is \$75,400.00; \$29,848.00 less than the Queensland average. A disparity increase of \$10,660.00 since 2017.
- Experiences a high rate of **families receiving Family Tax Benefit A**, with 88.2% (an increase of 5.3%) of families with children under 15 years, compared to the State average of 59.1% of families.
- 39.5% of residents have **not completed Year 11 or 12** compared to the state average of 29.0%.
- Experiences **an aging population**, with 54.1% of the population aged over 45, compared to the state average of 41.4%.
- Had a **median age** of 48.6 years, an increase of 6.6 years since 2011, compared to the state average of 38.4 years and increase of only 1.8 years over the same period.
- Experiences a **high rate of homelessness**, with 64.5 homeless persons per 10,000 persons (an increase of 16.5 persons), compared to the state average of 43.2 homeless persons per 10,000 persons (a decrease of 2.4 persons in the same period).
- Experiences a **high rate of people on a Jobseeker payment**, with 10.5% of people aged 22 to 64, compared to the state average of 6.2%.

- **Median total personal income** of \$33,488.00 P.A., compared to the state average of \$40,924.00 P.A. A disparity increase of \$3,380.00 since 2017.
- Higher than average number of **community members identifying as Aboriginal and/or Torres Strait Islander** with 8.0% of the population identified as Aboriginal and/or Torres Strait Islander, compared to the state average of 4.6%.
- The Tully SA2 also experiences **a higher-than-average number of individuals with a severe or profound disability, lower-than-average internet connectivity, higher-than-average number of people on all income support payment types, and a lower-than-average small business turnover.**

Attachment B: Distances between major centres

The following table indicates travel mileages and costs of return trips between major centres in the Cassowary Coast Regional Council Local Government Area with Tully and Innisfail. Mileage costs were calculated utilising the RACQ Road planner.

All distances are calculated as return trips.	Distance from Innisfail (km)	Mileage \$0.66/km to Innisfail	Distance from Tully (km)	Mileage \$0.66/km to Tully	Cost difference to/from Tully & Innisfail
INNISFAIL			104	\$68.64	
Mourilyan	14	\$9.24	90	\$59.40	\$25.08
South Johnstone	20	\$13.20	92	\$60.72	\$47.52
Mena Creek	36	\$23.76	94	\$62.04	\$28.28
Cowley Beach	58	\$38.28	78	\$51.48	\$13.20
Kurrimine Beach	74	\$48.84	68	\$44.88	\$3.96
Silkwood	56	\$36.96	52	\$34.32	\$2.64
El Arish	70	\$46.20	34	\$22.44	\$23.76
Bingil Bay	96	\$63.36	60	\$39.60	\$23.76
Mission Beach	102	\$67.32	56	\$36.96	\$30.36
Wongaling	104	\$68.64	46	\$30.36	\$38.28
South Mission	116	\$76.56	50	\$33.00	\$43.56
Feluga	92	\$60.72	32	\$21.12	\$39.60
Tully	104	\$68.64			
Murray Upper	166	\$109.56	64	\$42.24	\$67.32
Tully Heads	142	\$93.72	40	\$26.40	\$67.32
Kennedy	168	\$110.88	66	\$43.56	\$68.32
Cardwell	188	\$124.08	86	\$56.76	\$67.32

If a cultural precinct is located in Tully all locations south from Kurrimine Beach and Silkwood would gain significant cost savings benefit in terms of running costs for their vehicles and contribute to the reduction of greenhouse gases.

Attachment C: Benefits – economic, social, Traditional Owner

The **Arts and Cultural Precinct for Tully** would offer many advantages to the regions communities and visitors, including:

Economic Benefits – Community

- a new facility to entice visitors to town adding extra hours to their trip in the CCRC region, and perhaps an extra night or two, to learn about the area and encourage people to stay longer.
- existing arts and cultural collections of considerable value are professionally protected.
- a gallery shop would provide an outlet for local artists/artisans to sell their individual and creative product - arts and craft products, published books etc, a different range to merchandise offerings currently available. A gallery shop would provide an income for these artists and CCRC as well.
- Local residents, groups and schools wouldn't have so far to travel to experience cultural activities reducing travel costs and saving time.
- Slow down and potentially re-direct the exodus of youth from the district. The focus for employment in the past has mostly been around agriculture and ancilliary industries. This project has the potential to give young people more diverse avenues of interest and ideas for other kinds of careers.
- Facilitate creative outcomes across all age groups through workshops and activities at the Arts and Cultural Precinct for Tully.
- Regional businesses are given first preference for design and construction of the precinct.
- Materials for the project are, where-ever, possible sourced locally and sustainably.
- Money spent in the community cycles within the community; and
- The overall profile and standing of CCRC would be enhanced.

Economic Benefits - Tully Township

- Employment is generated throughout the construction phase.
- Employment is generated once construction is complete.
- Long term career opportunities are created for our young people - Indigenous and non-Indigenous.
- Tully businesses are included in the supply chain for materials and resources.
- Extra visitors to the town would increase opportunities for local businesses.
- Investment in the town would mean that local businesses will have more confidence into the future.
- There are opportunities for Tully to take advantage of its vicinity to Cairns and Townsville to foster other opportunities. About two hours each way to both centres the precinct would

attract specialised coach tours which include cultural experiences, business seminar events and conferences could be hosted, there are plenty of opportunities.

- Opportunities which would mean additional income, promotional exposure and growth for local businesses and CCRC.

Community Social Benefits

- As a community driven project this has the potential to energise our community and create a legacy which protects our past and looks towards the future.
- The new precinct would become an attraction for visitors and locals to visit, learn and engage with local histories, culture and communities in a purpose-built building with greater scope, accessibility and space, complementing and augmenting the CCRC Dorothy Jones Library.
- The precinct would become a central meeting place for our community and offer a welcoming, aesthetically pleasing place to spend time in, something that is sadly lacking in Tully.
- The local history collection housed at the Dorothy Jones Library in Tully has outgrown its space, is not easily accessible for public research, and not housed in optimum conditions. This collection has been gathered together over many decades and includes local government records, donated memorabilia, empirical and photographic material given in trust by council residents and community organisations. Donations continue to be offered but limitations of space and staff resources mean this is difficult to manage. Further donations of items and collections are expected as the years go by. These should not be dispersed to other centres as it would compromise accessibility and not honour the wishes of the people who have donated the material.
- A significant collection of artworks by local artists of note is currently housed in the library which is not climate controlled. A dedicated space for this collection is required for its longevity and allow space for additional acquisitions as circumstances allow.
- The development of an inviting, expansive and innovative precinct would encourage local and other programs which would make significant contribution to the cultural life of our community and visitors to the CCRC region.
- The local theatre group – Gumboot Theatre – currently has no appropriate space for rehearsal or performance. They have advised they could easily use the theatre for 18 weeks a year while still allowing outside acts to take advantage of the space.
- Travelling entertainers with national and international profiles already travel across Queensland and Tully misses out on these acts through the lack of a suitable venue.
- A medium sized meeting room would augment what is already available in the town and free-up library space which has regular scheduled events which often overlap. The Dorothy Jones Library is a community hub already working at capacity.
- Local and visiting artists and exhibitions would add to the cultural offerings available in the community, which are extremely limited at the moment.
- Community of all ages are exposed to new and alternate ideas, enriching their lives.

- Cultural activities such as movie nights, musical evenings, dance performances, book readings, talent shows, pantomimes, writers festival, book fairs, exhibitions, annual art prize, workshops, seminars, etc would attract local audiences as they already do in Mission Beach, Cardwell and Innisfail.
- The complex becomes an example of sustainable building practice and a showcase for the CCRC region and beyond.

Traditional Owner Benefits

- The Gulnay people, the knowledge holders of traditional lore/law for the immediate Tully area would have a central space for their office with use of meeting rooms and venue.
- Inclusion and acknowledgement of all Traditional Owners across the CCRC region, through displays, activities and events would be an ideal outcome. This acknowledgement of Traditional Owners would allow easier engagement opportunities and make a significant statement of how the CCRC wants to interact into the future, evidence inclusivity and demonstrate to the rest of Queensland how gestures like this could and would benefit the whole community.
- The collection of Aboriginal objects currently located within the Dorothy Jones library is a collection of organic material of great significance but is subject to deterioration over time as the works are not stored in appropriate conditions. The value of these items is increasing all the time as the number of craftsmen/women who make these items is rapidly declining. Current practitioners in the local area can be counted on two hands and this is a significant issue.
- A precinct would facilitate intergenerational knowledge transfer across generations and across the community.
- Traditional Owner artists with national and international reputations who live in the CCRC would have a local venue in which to showcase their work where it can be seen by local people, friends and family, and visitors to the CCRC region.
- Reconciliation and engagement contributes towards an ongoing process of healing.

Attachment D: Sustainability

Projected income sources to cover operational expenses of the **Arts and Cultural Precinct for Tully** might include, but is not limited to:

- A café (potentially offered through a tender process to local food outlets for a reasonable equitable lease) with indoor and outdoor dining would service the town and its regional ratepayers, local workers, council staff together with visitors. Evening events at the precinct could also be catered through this or other local businesses.
- Education study tours for domestic and international student groups. This is a major tourism market with specialist operators based in Cairns regularly handling groups of between 20 and 600 pax. These groups are interested in activities such as listening to Indigenous Elders' stories, cultural workshops such as weaving, painting, bush tucker, etc, all of which can be conducted in a safe, weather-protected venue. With the Tully Gorge close by, tour operators and their customers will benefit from dual natural and cultural attractions making Tully a more desirable destination.
- Art and craft sales. Handmade and locally sourced quality artworks, publications and products would provide income for artists and crafts men and women, with a commission fee for Council.
- Venue hire for commercial events such as conferences and seminars could add to the precincts revenue streams.
- Ticket sales from local theatre productions would attract income to the precinct as well as allow local theatre companies to grow their capacity and professionalism.
- Ticket sales from travelling entertainers and shows which are currently by-passing our town.
- Income from movie nights, workshops etc.

Ongoing operation and maintenance

The social value of a complex of this kind, professionally managed, directly builds and sustains social capital, community spirit and self-worth for residents.

The significant potential for income generated through the Arts and Cultural Precinct for Tully would offset the ongoing costs of maintenance and operations. Enabling the facility to fit within the existing CCRC program for infrastructure maintenance.

In order to reduce ongoing operational and maintenance costs, the Arts and Cultural Precinct for Tully will utilise current best practices including:

- Energy efficient and ergonomic construction and design would reduce the impact of annual running costs.
- Sustainable engagement practices operate within the complex to offset environmental impact and help change attitudes to waste etc., ie: water capture and use, energy use, no plastic bags etc.

Attachment E: Stakeholders

The current and potential stakeholders for the Tully Arts and Cultural Precinct include:

- A yet to be formed community consultative committee for the **Arts and Cultural Precinct for Tully**
- Gulgnay Traditional Owners of the Tully area
- Other Traditional Owners from across the CCRC region
- Local artists: visual arts, musicians, actors, theatre hands, arts professionals, digital technologies, craftsmen and women, hobbyists etc.
- Ratepayers and residents of the Cassowary Coast
- Tully Support Centre
- Tully100
- Tully 4854: looking forward advocacy group
- Tully and District Chamber of Commerce
- Gumboot Theatre Group
- Cassowary Coast Regional Council – Councillors, management and staff
- Cassowary Coast Tourism
- Local businesses
- Schools – kindy, primary and high schools
- Historical Societies and visiting researchers of historical material
- Other local arts, hobbyist and cultural groups: gem club, Shikh and other nationality communities, basket weavers, quilting groups, craft groups, musicians, textile groups, church groups, garden club, orchid club, seniors citizens, QCWA, Men's shed, Rotary, Lions, etc etc

Potential stakeholders outside the CCRC

Arts Queensland, Creative Australia (prev Australia Council for the Arts), Museums and Galleries Qld, Regional Arts Services Network, Queensland Museum, QAG|GOMA, Theatre Network Australia, JCU, CQU, Media Outlets, 4KZ, IACA (Indigenous Art Centre Alliance), Flying Arts Inc, Regional Development Network, CIAF (Cairns Indigenous Art Fair), to name but a few.

Attachment F: Potential funding sources

A number of potential funding sources have been identified including:

- Regional Precincts and Partnerships Program – Dept of Infrastructure, Transport, Regional Development, Communications & the Arts.
- Foundation for Rural & Regional Renewal (FRRR).
- Arts Qld Infrastructure Fund
- Future 2
- Ergon Energy
- One off centenary funding
- Accessible Tourism Infrastructure Grant
- The Telstra Foundation
- Business Queensland – Tourism industry and investment grants
- Contributions from regional businesses and ratepayers with capacity and interest in supporting an Arts and Cultural Precinct for Tully

Once the **Arts and Cultural Precinct for Tully** is up and running, other funding and support is available:

Who	What	
Creative Australia (previously Australia Council for the Arts)	National body to support arts development and creativity across Australia	Funding programs from governance training, individual and group projects, international touring, contemporary music touring, Indigenous, Playing Australia, fund raising residencies; Creative workplaces and more
ANAT (Australian Network for Art and Technology)	National organisation	ANAT is a global leader in brokering opportunities for artists to work with science and technology partners
Public Galleries Qld	Network of Public Galleries in Queensland	Professional development opportunities, promotion, networking
Qld Writers Centre	Membership org for writers and authors	Professional development and writing workshops, networking, promotion, opportunities, advocacy
Copyright Australia	National organisation	To promote an understanding of copyright law and its application.
Arts Hub	National organisation across multiple artforms	News, grant updates, career advice, advocacy,
National Gallery of Australia	Touring exhibitions	Speaker series, exhibitions, art programs for teachers, adults, young people and children

Qld Art Gallery	Queensland premier art gallery	Exhibitions, cinema, research, collections, educational resources, scholarships, publishing,
National Museum of Australia		Research, exhibitions, outreach programs, seminars
Queensland Museum	The state museum of Queensland - natural history, cultural heritage, science and human achievement.	Collections and research, projects, First Nations, learning resources, programs, museum services across the state
Theatre Network Australia	leading national industry development organisation for the contemporary performing arts, with a particular focus and priority for supporting independent creative practitioners and small to medium companies.	Advocacy, newsletter, grant and other advice, Biennial Forum at different locations across Australia, TNA's ASSITEJ Advisory Committee is made up of representatives from the performance with/for/by young people sector from across the country.
Arts Qld	Creative Together looks to the future, where the strength of the sector will foster the growth of bold and rich cultural experiences for audiences, and where arts and culture are valued for the important role they play in enriching Queensland and securing a prosperous and creative future for the state.	To advance Creative Together's vision for a state renewed and transformed by arts, culture and creativity. With a focus on sustainability, accessibility, and social and economic impact in Queensland communities, Grow 2022-2026 recognises the critical action required to support the Queensland Government's Objectives for the Community.
Regional Arts Fund	\$\$\$ project dollars	For the benefit of regional/remote artists, arts workers, audiences and communities.
FRRR	A not-for-profit organisation, connecting common purposes and funding from government, business and philanthropy with the genuine local needs of rural people and places.	FRRR provides funding and capacity building support at the hyper-local level. We have reach, relationships, networks, and know-how to align funding, big and small, to community-led solutions that build resilience and long-term viability and vitality of smaller remote, rural, and regional communities across Australia.